

PLAT #1733

DEDICATION

KNOW ALL MEN BY THESE PRESENTS, That California Company, a corporation of California, Harold F. Peters and Lois E. Peters husband and wife, and Marie Koester, formerly Marie Peters, have caused to be plotted and laid off into lots, blocks and streets the land shown hereon, to be known as FOREST HILLS ADDITION, said land being:

IN WITNESS WHEREOF the said corporation has caused its corporate name to be subscribed and its corporate seal to be affixed this 23rd day of February, 1963, and the said persons have caused their signatures to be affixed this 23rd day of April, 1963.

CALIFORNIA COMPANY

Marie Koester, Harold F. Peters

ACKNOWLEDGMENTS

STATE OF CALIFORNIA COUNTY OF SPOKANE, ss: I, Philip L. Sargent, a Registered Land Surveyor, hereby certify that this map represents a true and correct record of this survey and monuments shown hereon have been placed on the ground.

STATE OF WASHINGTON COUNTY OF SPOKANE, ss:

On this 23rd day of February, 1963, before me a notary public in and for the State of California, duly commissioned, personally appeared Marie Koester and Harold F. Peters, to me known to be the President and Secretary respectively of California Company, the corporation that executed the foregoing instrument, and acknowledged the said instrument to be the free and voluntary act and deed of said persons for the uses and purposes herein mentioned.

LAND SURVEYOR'S CERTIFICATE

I, Philip L. Sargent, a Registered Land Surveyor, hereby certify that this map represents a true and correct record of this survey and monuments shown hereon have been placed on the ground.

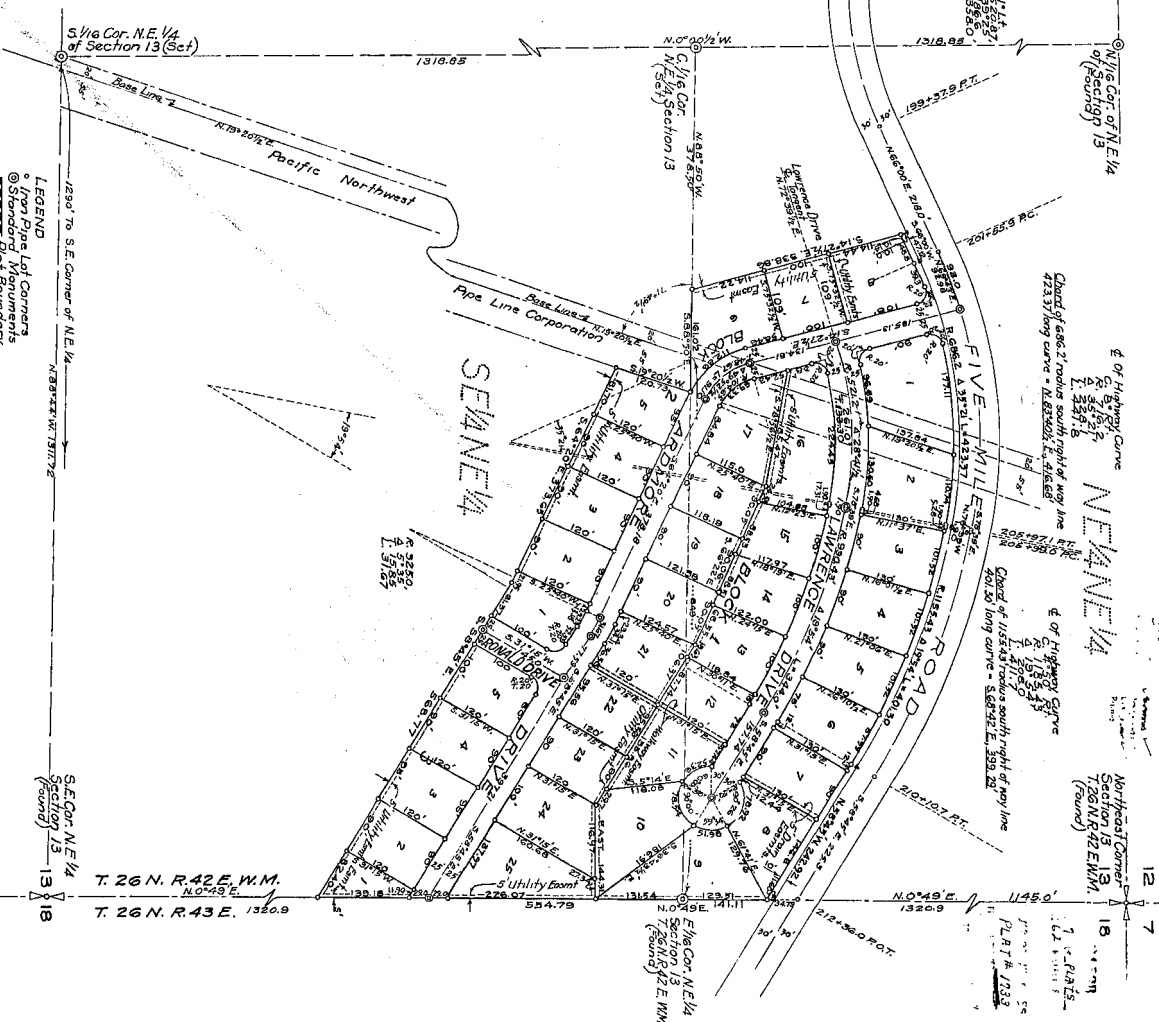
Examined and approved this 23rd day of April, 1963. SPOKANE COUNTY ROAD ENGINEER

Examined and approved this 23rd day of April, 1963. SPOKANE COUNTY ASSESSOR

Examined and approved this 23rd day of April, 1963. SPOKANE COUNTY TREASURER

Examined and approved this 23rd day of April, 1963. SPOKANE COUNTY PLANNING COMMISSION

Examined and approved this 23rd day of April, 1963. SPOKANE COUNTY COMMISSIONERS



BOUNDARY TRAVERSE table with columns: COURSE, DISTANCE, LATITUDE, DEPARTURE. Rows include bearings and distances for various points on the plat.

FINAL PLAT FOREST HILLS ADDITION PART OF NE 1/4 SECTION 13 T 26 N. R 42 E W.M.

PHILIP L. SARAGENT - REGISTERED LAND SURVEYOR W.1012 GARLAND AVE. SPOKANE WASHINGTON February 25, 1963

BOUNDARY TRAVERSE table (continued) with columns: COURSE, DISTANCE, LATITUDE, DEPARTURE. Rows include bearings and distances for various points on the plat.

PLAT #1733

DEDICATION

KNOW ALL MEN BY THESE PRESENTS, That Calivona Company a corporation of California, Harold F. Peters and Lois Peters husband and wife, and Helen Mayhew and Marie Kosogler formerly Helene Peters, have...

IN WITNESS WHEREOF the said corporation has caused its corporate name to be subscribed and its corporate seal to be affixed this 14th day of December, 1963 and the said persons have caused their signatures to be affixed this 14th day of December, 1963.

ACKNOWLEDGMENTS

State of California, County of Santa Clara. On this 14th day of December, 1963, before the undersigned Notary Public in and for the State of California...

LAND SURVEYOR'S CERTIFICATE

I, Philip L. Sargent, a Registered Land Surveyor, hereby certify that this map represents a true and correct record of the survey and field notes and work performed by me or under my direction...

Examined and approved this 25th day of May, 1964. U. J. Lu... Spokane County Road Engineer. Examined and approved this 22nd day of May, 1964. G. A. ... Spokane County Assessor.

Examined and approved this 22nd day of May, 1964. ... Spokane County Treasurer. Examined and approved this 23rd day of May, 1964. ... Spokane County Planning Commission.

SPOKANE COUNTY PLANNING COMMISSION

Examined and approved this 23rd day of May, 1964. ... Spokane County Commissioners.

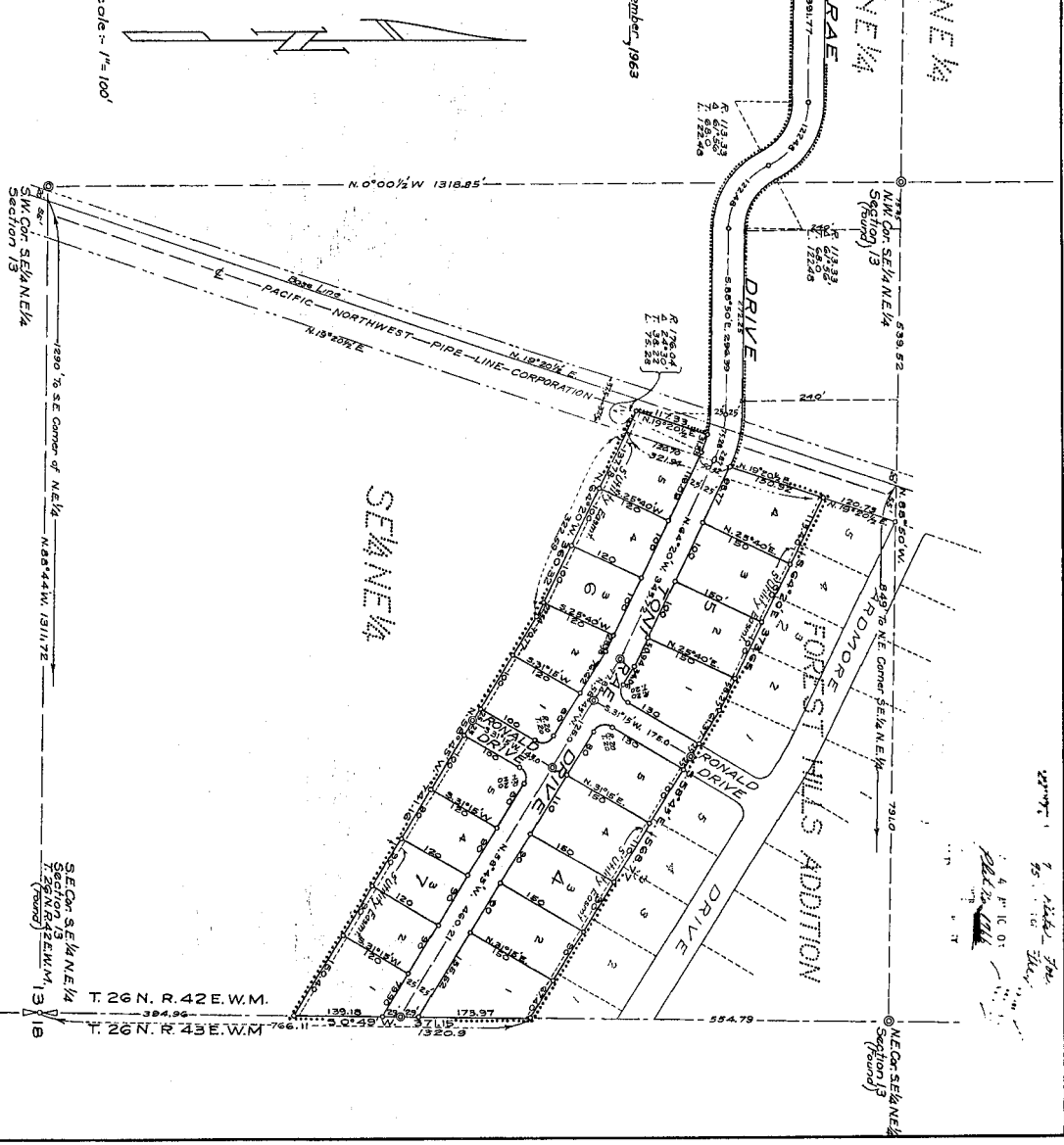
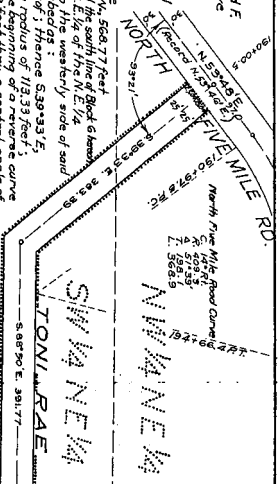


Table with columns: COURSE, DISTANCE, LATITUDE, DEPARTURE, LONGITUDE. Includes data for boundary traverse and bearings.

LEGEND: Iron Pipe Lot Corners, Standard Boundaries, Plat Boundary. All bearings shown on this plat conform with and are relating to the bearings shown on the plat of Forest Hills Addition.

FOREST HILLS FIRST ADDITION

SECTION 13 T6N, R42E, W.M. SPOKANE COUNTY, WASHINGTON. Philip L. Sargent - Registered Land Surveyor. W1012 GARLAND AVE. SPOKANE, WASHINGTON. SCALE: 1"=100'. DECEMBER 14, 1963.

PLAT #1766

PLAT #1766

1766

1766